

NXT* Silane

Coupling Agent for Silica-Reinforced
 Tire Tread Compounds



NXT silane provides options for enhanced tire performance and overall systems cost-efficiencies for tire manufacturers.

NXT silane, a thiocarboxylate functional silane, has been shown to enable reduced rolling resistance without loss of wet traction, while increasing overall production efficiency for tire manufacturers as compared to standard sulfur silanes.

Silica compounds coupled with NXT silane have exhibited improved silica dispersion, easier mixing, and faster, pliable processing. Compounds containing NXT silane show lower Payne Effect, improved δ values, and better resilience properties. In addition, NXT silane typically can be used with high surface area silica and functionalized polymers for easy processing of high performance compounds. Green compounds made with NXT silane have demonstrated stability for a significantly longer time without reflocculation.

Key Features and Typical Benefits

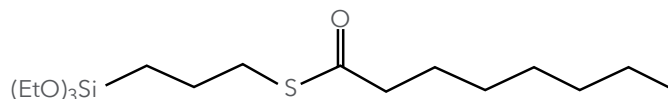
- Fewer non-productive mixing steps
- Reduced compound viscosity
- Faster extrusion
- Improved Payne Effect
- Increased resilience
- Reduced Tan δ max
- Excellent dynamic properties at low temperature (-20 °C to +10 °C)

Typical Physical Properties

Physical Form	Clear liquid
Color	Pale yellow
Specific Gravity at 20 °C, OECD-Guideline No. 102	0.9686
Flash Point, Pensky-Martens Closed Cup, °C (°F)	110 (230)

Typical properties are average data and are not to be used as or to develop specifications.

Chemical Structure



3-Octanoylthio-1-propyltriethoxysilane (Mol. Wt. 364)

Table 1: Typical Silica-Reinforced Tire Tread Formulation Used to Evaluate NXT Silane

PHR	Ingredient
103.2	SSBR (Oil extended; 55% vinyl, 25% styrene content)
25	BR (Butadiene rubber; 96% <i>cis</i>)
80	Precipitated silica
10	N-330 Carbon Black
Variable	TESPD, TESPT or NXT silane (Momentive Performance Materials)
5.0	DAE oil
2.5	ZnO
2.0	Stearic Acid
2.0	6PPD (antioxidant/antiozonant)
1.5	Wax
Final Mix Ingredients	
Variable	Sulfur†
2.0	CBS (primary accelerator)
2.0	DPG (secondary accelerator)

† Total theoretical sulfur content for each compound equals 4.93×10^{22} atoms

Product formulations are included as illustrative examples only. Momentive makes no representation or warranty of any kind with respect to any such formulations, including, without limitation, concerning the efficacy or safety of any product manufactured using such formulations.

Potential Applications

For improved rolling resistance without loss of wet traction in tires, NXT silane can be considered for use in tire tread compounds to enable high silica loading while typically managing compound viscosity, improving processibility, and increasing mixing temperatures, even in functionalized polymer and high surface area silica compounds. NXT silane can be mixed at temperatures as high as 170 °C without scorch and the number and duration of non-productive mixing steps can be minimized to achieve maximum silica dispersion.

Potential Applications (continued)

Compounding procedures for traditional polysulfide TESP and TESPT silanes require two or more non-productive mixes. Differences in mixing procedures between NXT silane and these traditional polysulfide silanes are shown in Table 2.

Table 2: Mixing Procedures for Polysulfide and NXT Silanes

Two Step Mix Procedure for S4 (TESPT) Silane	Two Step Mix Procedure for S2 (TESPD) and NXT Silanes
Size "OOC" mixer - 4.2 L capacity, 70% FF	Size "OOC" mixer - 4.2 L capacity, 70% FF
First Non-Productive Pass at 55 rpm, 70 °C	First Non-Productive Pass at 55 rpm, 70 °C
t _{0 min} Add polymers, ram down mix (RDM) 30 seconds	t _{0 min} Add polymers, ram down mix (RDM) 30 seconds
t _{0.5 min} Add 50% silica, all silane, RDM 60 seconds	t _{0.5 min} Add 50% silica, all silane, RDM 60 seconds
t _{1.5 min} Add 50% silica, chemicals, RDM 60 seconds	t _{1.5 min} Add 50% silica, chemicals, RDM 60 seconds
t _{2.5 min} Add CB, oil at 125 °C	t _{2.5 min} Add CB, oil at 125 °C
t _{2.5 min} Reduce rotor speed to 35 rpm, RDM 90 seconds	t _{2.5 min} Reduce rotor speed to 35 rpm, RDM 90 seconds
t _{4 min} Sweep, RDM 120 seconds	t _{4 min} Sweep, RDM 120 seconds
t _{4 min} Hold temperature at 135-140 °C for 2 minutes	t _{4 min} Hold temperature at 145-150 °C for 2 minutes
t _{6 min} Discharge at 145 °C	t _{6 min} Discharge at 155°C
Mill Blend, sheet off 80-90 °C roll mill, cool to near room temperature	Mill Blend, sheet off 80-90 °C roll mill, cool to near room temperature
Second Non-Productive Pass at 50 rpm, 70 °C	Second Non-Productive Pass at 50 rpm, 70 °C
t _{0 min} Add compound from first pass, RDM 60 seconds	t _{0 min} Add compound from first pass, RDM 60 seconds
t _{1 min} Add remainder of ingredients, RDM 60 seconds	t _{1 min} Add remainder of ingredients, RDM 60 seconds
t _{2 min} Sweep, RDM 120 seconds	t _{2 min} Sweep, RDM 120 seconds
t _{2 min} Hold temperature at 135-140 °C for 2 minutes	t _{2 min} Hold temperature at 145-150 °C for 2 minutes
t _{4 min} Discharge at 145 °C	t _{4 min} Discharge at 155 °C
Mill Blend, sheet off 80-90 °C roll mill, cool to near room temperature	Mill Blend, sheet off 80-90 °C roll mill, cool to near room temperature
Final Productive Pass at 45 rpm, 50 °C	Final Productive Pass at 45 rpm, 50 °C
t _{0 min} Add compound from second pass, cure package RDM 60 seconds	t _{0 min} Add compound from second pass, cure package RDM 60 seconds
t _{1 min} Sweep, RDM 90 seconds	t _{1 min} Sweep, RDM 90 seconds
t _{1 min} Hold temperature at 90-95 °C for 1.5 minutes	t _{1 min} Hold temperature at 90-95 °C for 1.5 minutes
t _{2.5 min} Discharge at 100-105 °C	t _{2.5 min} Discharge at 100-105 °C
Mill Blend, sheet off 80-90 °C roll mill, cool to near room temperature	Mill Blend, sheet off 80-90 °C roll mill, cool to near room temperature

Potential Applications (continued)

Table 3: Comparison of Rubber Compounds Containing NXT Silane, Standard S2 (TESPD) Silane or Standard S4 (TESPT) Silane

Silane	S2	S4	NXT Silane	NXT Silane
Silane phr	5.65	6.41	6.4	6.4
Hardness Adjustment			None	+5 phr silica
Number of Mixing Steps	2	2	2	2
Reaction Temperature	155	145	160	160
Mooney Viscosity @ 100 °C ML (1+4)	87	87	77	79
Mooney Scorch @ 135 °C MS1+, t3, minutes	15	12	14	14
Rheometer (160 °C, 30 Mins.) ML, dN-m MH, dN-m Δ Torque, dN-m T90, minutes	3.34 21.98 18.64 18.00	3.47 21.76 18.29 18.28	2.56 20.60 18.04 16.19	2.83 22.24 19.41 17.29
Dynamic Properties Strain Sweep @ 55 °C E' max E' min E' mean E' initial (MPa) ΔE' (MPa) E'' max (MPa) Tan δ max Interaction Parameter (IP)	12.8 5.3 8.8 12.83 7.51 2.05 0.22 100	12.8 5.1 8.6 12.78 7.67 2.05 0.22 88	12.3 5.6 8.8 12.29 6.72 1.68 0.19 115	13.8 5.8 9.4 13.77 7.94 1.98 0.20 102
Physical Properties @ 25 °C Shore A @ RT Shore A @ 70 °C Elongation (%) Tensile Strength (MPa) 50% Modulus (MPa) 100% Modulus (MPa) 300% Modulus (MPa) M300 - M100 (MPa) RI (M300/M100) Break Energy (J/cm ³)	71 67 362 14.5 1.5 2.6 12.7 10.1 4.9 20	69 65 384 14.2 1.5 2.4 11.5 9.1 4.8 21	68 65 371 15.5 1.6 2.9 13.3 10.4 4.6 23	71 67 358 15.5 1.7 3.0 13.9 10.9 4.6 22
Rebound 0°C (%) RT (%) 70°C (%)	9 18 39	9 19 41	7 19 43	8 18 41
Temp Sweep @ 0.5% Strain Tan δ @ Tg Tan δ @ 0 °C Tan δ @ 60 °C E* @ 25 °C	0.837 0.816 0.203 21	0.880 0.801 0.208 20	0.889 0.860 0.170 18	0.891 0.865 0.189 20

Note: Test data. Actual results may vary.

Potential Applications (continued)

All figures shown below compare rubber compounds containing S2 (TESPD) silane, S4 (TESPT) silane and NXT silane

Figure 1: Comparison of Batch Viscosities

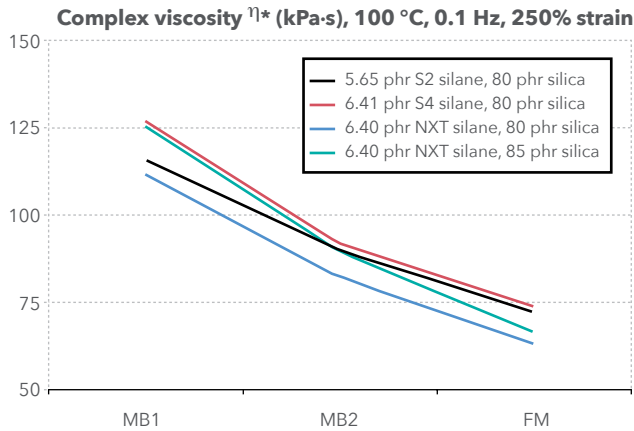


Figure 2: Cure Curve Comparison

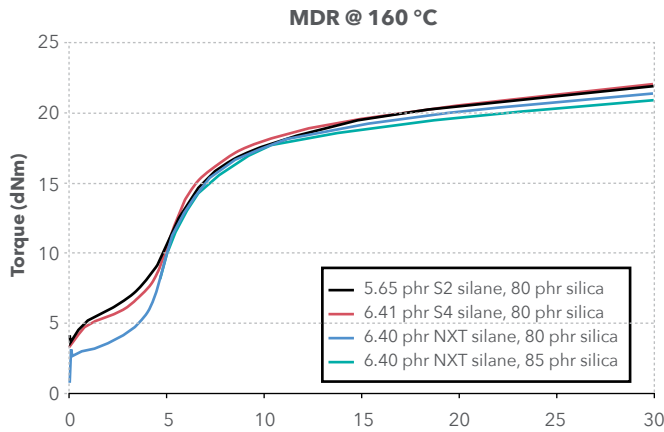
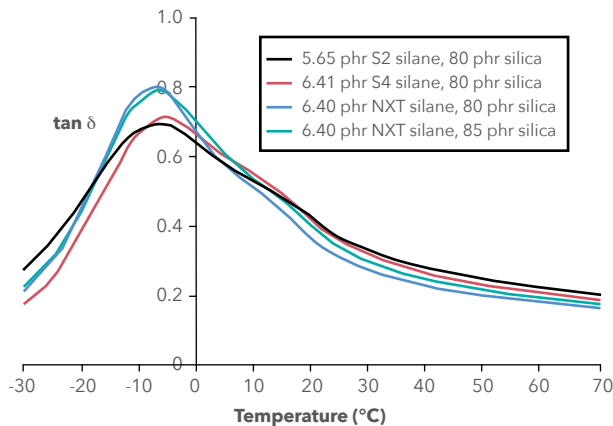


Figure 3: Temperature Sweep, 10.0 Hz, @ 0.5% Strain



Note: Test data. Actual results may vary.

Potential Applications (continued)

Figure 4: Low Viscosity and Improved Storage Stability with NXT Silane

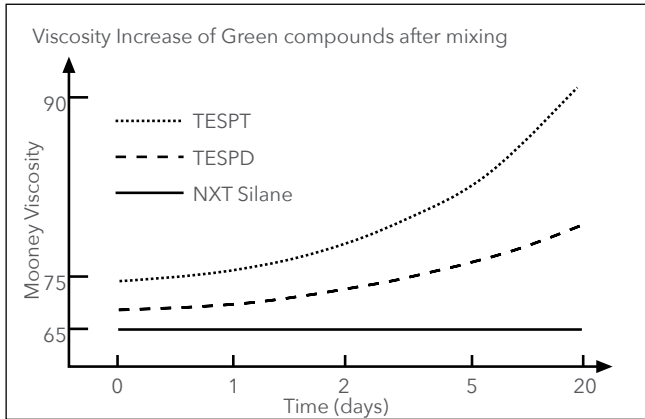


Figure 5: Strain Sweep, 10.0 Hz, @ 55 °C

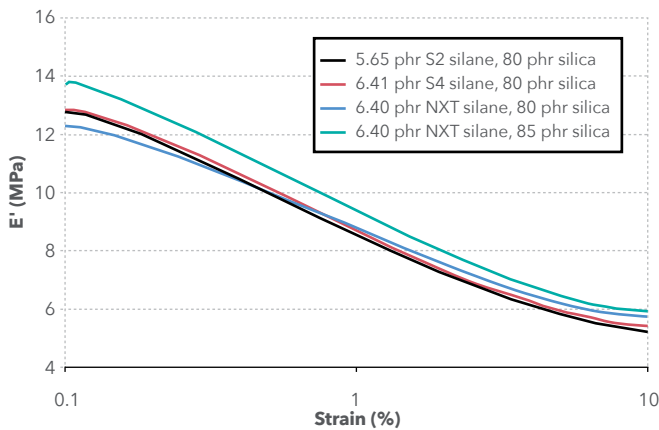


Figure 7: E'' Values, 10.0 Hz, @ 55 °C

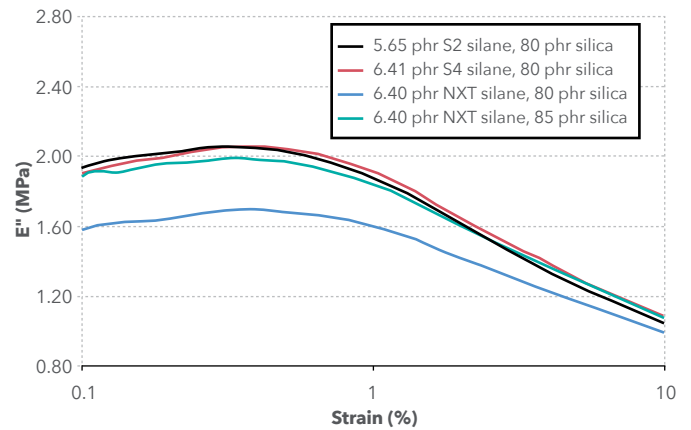
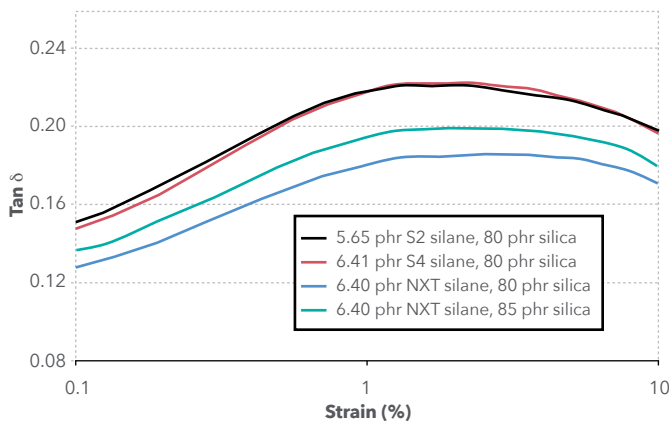


Figure 6: Tan δ max Values, 10.0 Hz, @ 55 °C



Note: Test data. Actual results may vary.

General Instructions for Use

Please refer to Tables 1 and 2 for details regarding example formulation and mixing procedures using NXT silane.

Dynamic properties with NXT silane compounds are typically superior to standard S2 (TESPD) and S4 (TESPT) silane compounds in the 60-110 phr equivalent silica loading range. At 80 phr silica loading, 6.41 phr of standard S4 (TESPT) silane typically produces 35% more VOCs than 6.4 phr of NXT silane.

Maximum coupling strength can be achieved when there is an 8% loading of NXT silane based on the phr loading of silica. That is equivalent to 6.4-6.8 phr of NXT silane in an 80-85 phr silica formulation, respectively. NXT silane coupling strength was improved with higher mixing temperatures and higher vinyl content of the SBR polymer. In formulations in which the Shore A Hardness is slightly less than the control compound, 1-5 phr of silica can be added to increase hardness without reducing physical or dynamic properties.

NXT silane's reaction mechanism allowed non-conventional solutions for common compound challenges. Modulus 300% may be increased by adding silane, silica, and stearic acid in the first non-productive mix, while adding zinc oxide in the second non-productive mix. The accelerator, DPG (0.5-1.0 phr), can be added late in the second non-productive mix to increase bound rubber content. Compound viscosity can be reduced substantially by adding 0.5-1.0 phr of CBS in the second non-productive mix.

Patent Status

Nothing contained herein shall be construed to imply the nonexistence of any relevant patents or to constitute the permission, inducement or recommendation to practice any invention covered by any patent, without authority from the owner of the patent.

Limitations

Customers must evaluate Momentive Performance Materials products and make their own determination as to fitness of use in their particular applications.

Product Safety, Handling and Storage

Customers should review the latest Safety Data Sheet (SDS) and label for product safety information, safe handling instructions, personal protective equipment if necessary, emergency service contact information, and any special storage conditions required for safety. Momentive Performance Materials (MPM) maintains an around-the-clock emergency service for its products. SDS are available at www.momentive.com or, upon request, from any MPM representative.

For product storage and handling procedures to maintain the product quality within our stated specifications, please review Certificates of Analysis, which are available in the Order Center. Use of other materials in conjunction with MPM products (for example, primers) may require additional precautions. Please review and follow the safety information provided by the manufacturer of such other materials.

Customer Service Centers

Worldwide

Email: commercial.services@momentive.com

Americas

+1 800 295 2392
+1 614 986 2495

**Europe, Middle East,
Africa and India**

00800 4321 1000
+40 213 044229

Asia Pacific

China
800 820 0202
+86 21 3860 4892

All Other Countries
+60 3 9206 1543

Japan

0120 975 400
+81 276 20 6182

Disclaimer

THE MATERIALS, PRODUCTS AND SERVICES OF MOMENTIVE PERFORMANCE MATERIALS INC. AND ITS SUBSIDIARIES AND AFFILIATES (COLLECTIVELY "SUPPLIER"), ARE SOLD SUBJECT TO SUPPLIER'S STANDARD CONDITIONS OF SALE, WHICH ARE INCLUDED IN THE APPLICABLE DISTRIBUTOR OR OTHER SALES AGREEMENT, PRINTED ON THE BACK OF ORDER ACKNOWLEDGMENTS AND INVOICES, AND AVAILABLE UPON REQUEST. ALTHOUGH ANY INFORMATION, RECOMMENDATIONS, OR ADVICE CONTAINED HEREIN IS GIVEN IN GOOD FAITH, SUPPLIER MAKES NO WARRANTY OR GUARANTEE, EXPRESS OR IMPLIED, (i) THAT THE RESULTS DESCRIBED HEREIN WILL BE OBTAINED UNDER END-USE CONDITIONS, OR (ii) AS TO THE EFFECTIVENESS OR SAFETY OF ANY DESIGN INCORPORATING ITS PRODUCTS, MATERIALS, SERVICES, RECOMMENDATIONS OR ADVICE. EXCEPT AS PROVIDED IN SUPPLIER'S STANDARD CONDITIONS OF SALE, SUPPLIER AND ITS REPRESENTATIVES SHALL IN NO EVENT BE RESPONSIBLE FOR ANY LOSS RESULTING FROM ANY USE OF ITS MATERIALS, PRODUCTS OR SERVICES DESCRIBED HEREIN. Each user bears full responsibility for making its own determination as to the suitability of Supplier's materials, services, recommendations, or advice for its own particular use. Each user must identify and perform all tests and analyses necessary to assure that its finished parts incorporating Supplier's products, materials, or services will be safe and suitable for use under end-use conditions. Nothing in this or any other document, nor any oral recommendation or advice, shall be deemed to alter, vary, supersede, or waive any provision of Supplier's standard Conditions of Sale or this Disclaimer, unless any such modification is specifically agreed to in a writing signed by Supplier. No statement contained herein concerning a possible or suggested use of any material, product, service or design is intended, or should be construed, to grant any license under any patent or other intellectual property right of Supplier covering such use or design, or as a recommendation for the use of such material, product, service or design in the infringement of any patent or other intellectual property right.